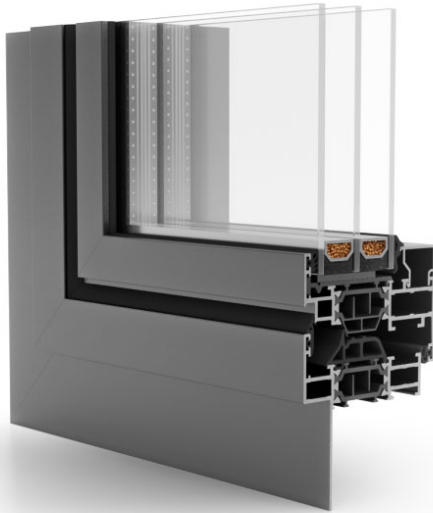


MaxLight

Profile shape: Nailing Fin



- ✓ system with a thermal break
- ✓ smooth and slender profile line
- ✓ profile with a construction depth of 2-15/16" (74.8 mm)
- ✓ a wide range of colors: RAL palette, structural colors, wood-like colors, anode, bicolor
- ✓ system type: fixed window & opening inwards window
- ✓ height of frame with sash 2-3/4" (70 mm)
- ✓ we lacquer in the full RAL K7 color palette and, on request, in other colors (use powder code)

3

Gaskets

3

Chambers

Max Light systems are dedicated primarily to modern architectural projects. The windows are unique thanks to the slim profiles used. The unique, minimalist design gives the structure a modern, industrial character.

* The above U-factor is a general achievable value for this window system. The detailed value can be provided with the selected IGU and product type.

MAXLIGHT

ALUMINUM

DOOR

ALIPLAST